

电气系统: 控制部分采用模块化、高度集成的DVEC(双中央配电箱)设计, 应用先进的可编程3D矩阵技术, 方便变更, 使用AMP(安普)和DELPHI(德尔福)接插件, 具有较好的防尘、防溅功能。设计简单明了, 性能安全可靠, 同时预留了多个可根据用户需要进行功能扩展的接口, 减少潜在故障点, 提高系统的可靠性。

模块化设计, 减少故障点, 提高可靠性
 防尘、防水



Electric system: The control parts adopts modular and highly integrated DVEC (double central distribution box) design. With advanced programmable 3D matrix technology, it is easy to alter. The connectors made by AMP and DELPHI have good dust-proof and splash-proof functions. The design is simple and clear and performance is safe and reliable. Meanwhile, the interfaces can be pre-reserved for the function extension needed by the users, thus reducing the potential fault points and raising the reliability of the system.

Modular design to reduce the fault points and raise the reliability

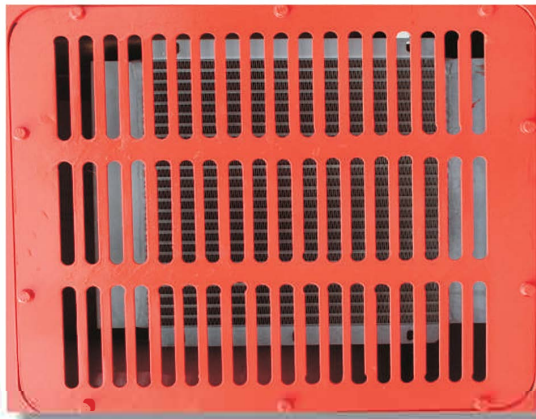
Dust and water resistance



散热系统: 采用进口德国AKG品牌散热器, 该散热器应用油水复合技术, 单层布置, 便于冲洗和保养, 优越的散热性能确保各系统部件都能在良好的温度条件下工作, 有效的降低了整车故障率, 提高整车可靠性。

发动机水、中冷、变速箱油各自独立的复合散热器 自动钎焊技术, 铝质散热器, 质量可靠, 散热功率大

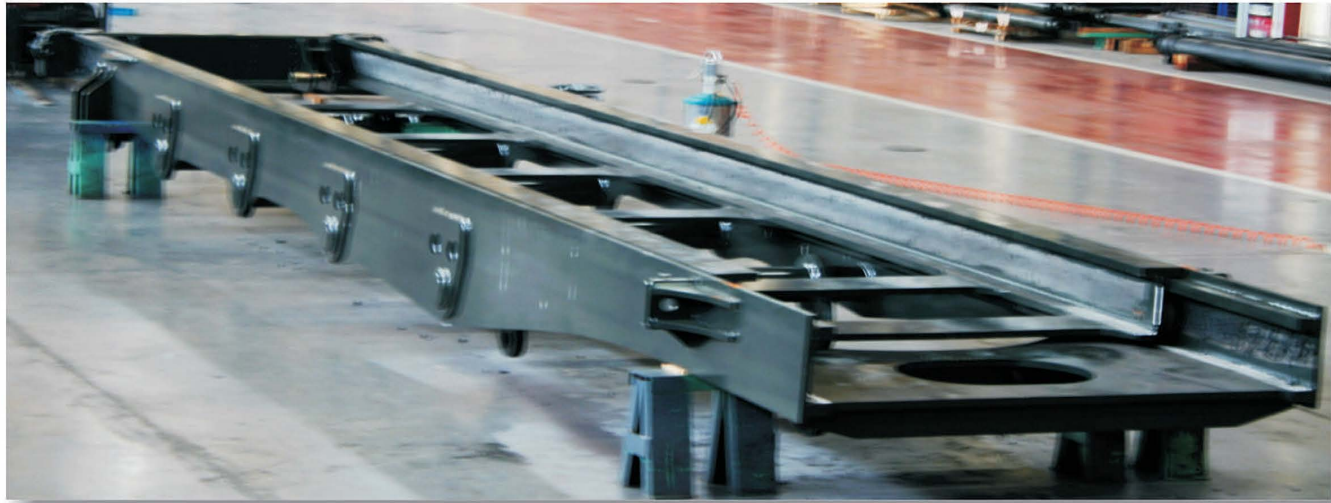
Heat radiation system: AKG brand radiator imported from German is used, which applies water and oil compound technology, is arranged in single layer and facilitates flushing and maintenance. The superior heat dissipation performance ensures that the parts of each system can work under the good temperature condition, thus effectively cutting down the fault rate and raising the reliability of the whole car.



驾驶室内座椅采用全悬浮减震结构, 可做全方位的调节; 各操作踏板、手柄位置按人体工程学原理设计, 可大大降低劳动强度; 加大司机室设计, 四面全明玻璃, 视野开阔, 配冷暖空调。

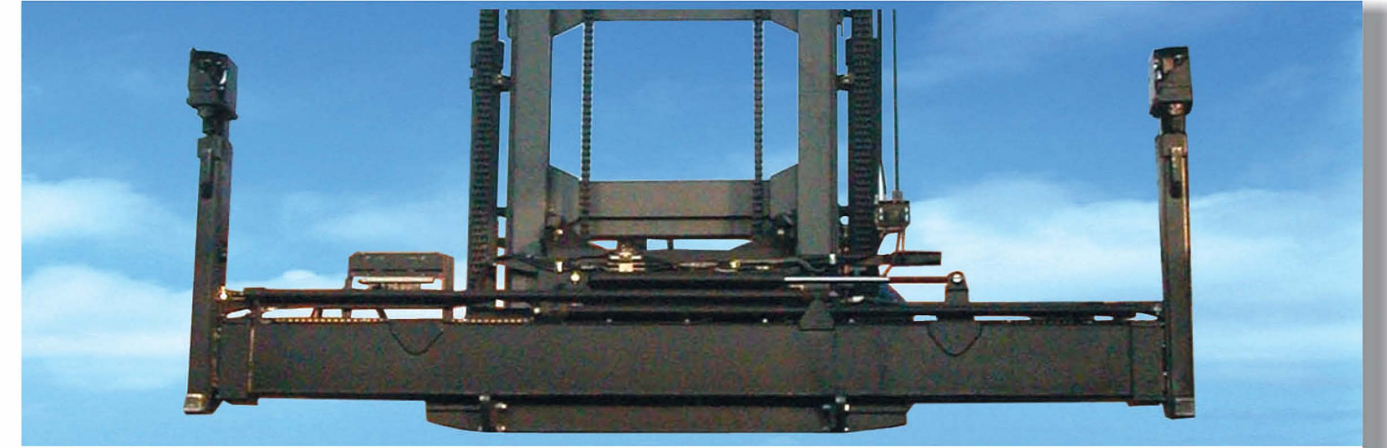
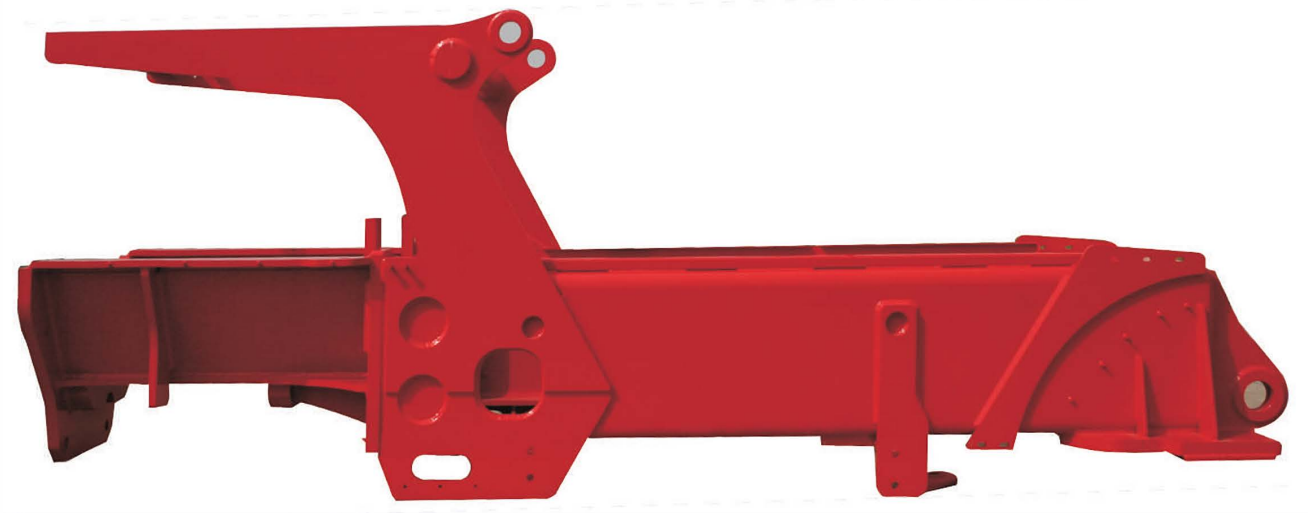
The drive seat in the drive cab adopts full suspension and vibration attenuation structure and can be adjusted in all directions. Each operation pedals and handle position are designed according to the principle of human engineering and can greatly reduce the labor intensity. The drive cab is designed with transparent glasses on all sides and wide field of vision and is furnished with air conditioner as well.





利用优化设计手段进行加宽门架设计，改善了整车的视野，同时增加了门架的抗扭性，起升下降更加平稳可靠。

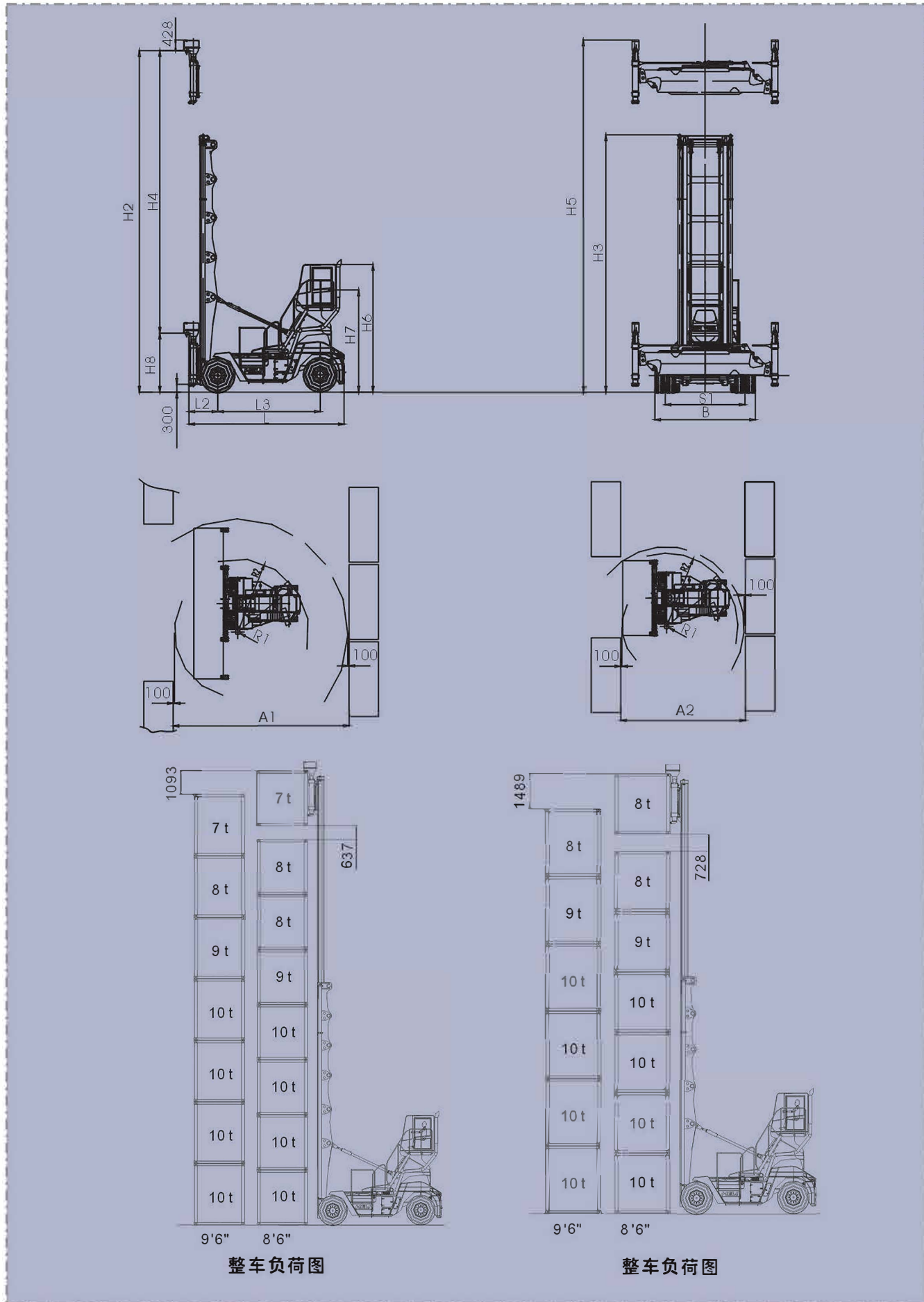
To broaden the gantry design by making use of the optimum design means, which improves the field of vision of the whole car and strengthens the resistance to torsion of gantry as well so that the ascending and descending are more smooth and reliable.



吊具：采用瑞典ELME公司的新型吊具，该吊具采用优质钢制造，单筒式结构，强度高，视野好，带安全互锁功能。可实现侧移、伸缩和开闭锁等动作，并有吊具状态指示，辅助灯光照明等功能。

Spreader: The new type spreader from ELME Company, Sweden is used, which is made with high quality steel and of single-tube structure and has high strength, good field of vision and safe interlocking function. It can realize the actions of sideways, expansion, contraction, unlocking and locking etc and has the functions of spreader status indicator and auxiliary lamplight lighting etc.





现场使用灵活，轻巧。

Flexible and handy operation on site

